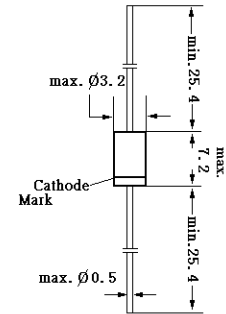


1N60 Germanium Diode Datasheet

1N60P, 1N60S

POINT CONTACT GERMANIUM DIODES

1N60 is a point contact diode employing N-from Germanium and gives an efficient and excellent linearity when used in TV image detection, FM detection, radio, AM detection, etc.



Glass case JEDEC DO-7

Dimensions in mm

Absolute Maximum Ratings ($T_a = 25^\circ\text{C}$)

	Symbol	Value	Unit
Peak Reverse Voltage	V_{RM}	45	V
Reverse Voltage dc	V_R	20	V
Peak Forward Current	I_{FM}	150	mA
Average Rectified Output Current	I_O	50	mA
Surge Forward Current	I_{surge}	500	mA
Junction Temperature	T_j	75	$^\circ\text{C}$
Storage Temperature Range	T_S	-55 to +175	$^\circ\text{C}$

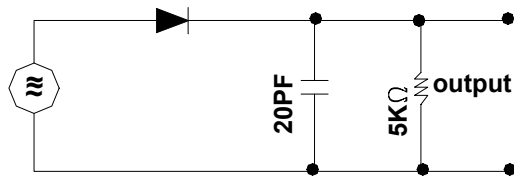
Characteristics (1N 60 P)

	Symbol	Test condition($T_a 25 \pm 2^\circ\text{C}$)	Min.	Typ.	Max.	Unit
Forward Current	I_F	$V_F = 1\text{V}$	4	-	-	mA
Reverse Current	I_R	$V_R = 10\text{V}$	-	-	50	μA
			-	-	100	μA
Junction Capacitance C	-	$f = 1\text{MHz}, V = -1\text{V}$	-	-	1	pF
Rectification efficiency	η	$V_i = 2\text{Vrms}, R = 5\text{K}\Omega$ $C = 20\text{PF}, f = 40\text{MHz}$	55	-	-	%

Pair I_F 6mA at 1V, I_R 20 μA at 10V

<https://www.mikeselectronicparts.com>

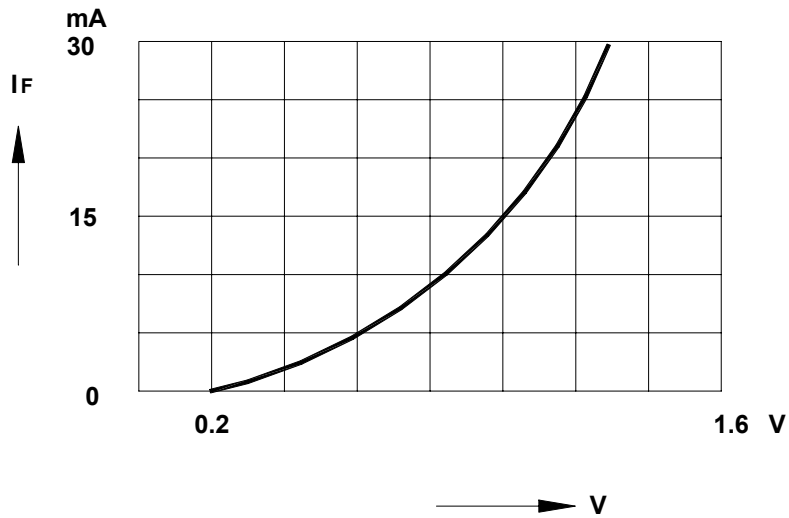
1N60P, 1N60S



Input 2Vrms

Rectification Efficiency Measurement Circuit

Forward Characteristics



Reverse Characteristics

